

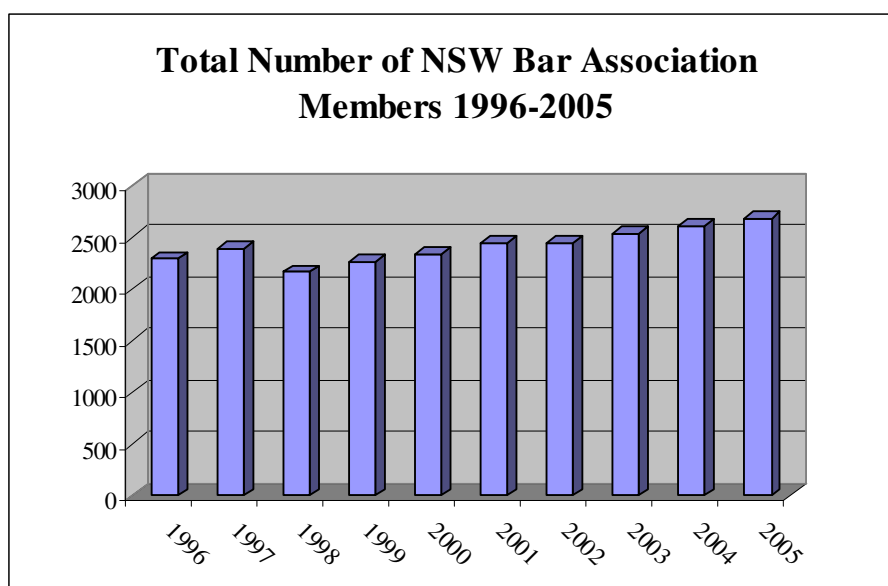
SECTION ONE
ALL MEMBERS OF THE NSW BAR
ASSOCIATION
(PRACTISING AND NON PRACTISING)

TABLE OF CONTENTS

TOTAL NUMBER OF MEMBERS	3
MEMBERSHIP DISTRIBUTION BY GENDER	4
MEMBERSHIP DISTRIBUTION BY CATEGORY 1996 - 2005.....	5
GEOGRAPHICAL LOCATION OF MEMBERS	6
AGES OF MEMBERS	7
SENIOR AND JUNIOR MEMBERS (INNER/OUTER BAR)	8
E-MAIL ADDRESSES.....	9

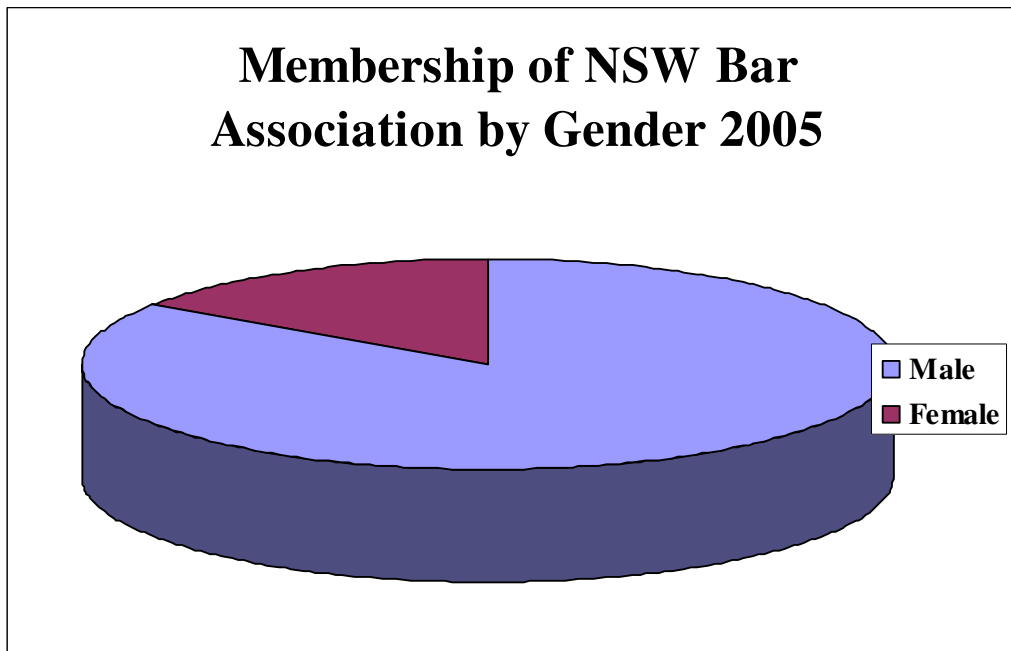
TOTAL NUMBER OF MEMBERS 1996-2005

Year	Total	Annual % Change
1996	2290	
1997	2390	4.37%
1998	2161	-9.06%
1999	2265	4.81%
2000	2337	3.18%
2001	2443	4.53%
2002	2448	0.20%
2003	2537	3.60%
2004	2609	2.84%
2005	2680	2.72%



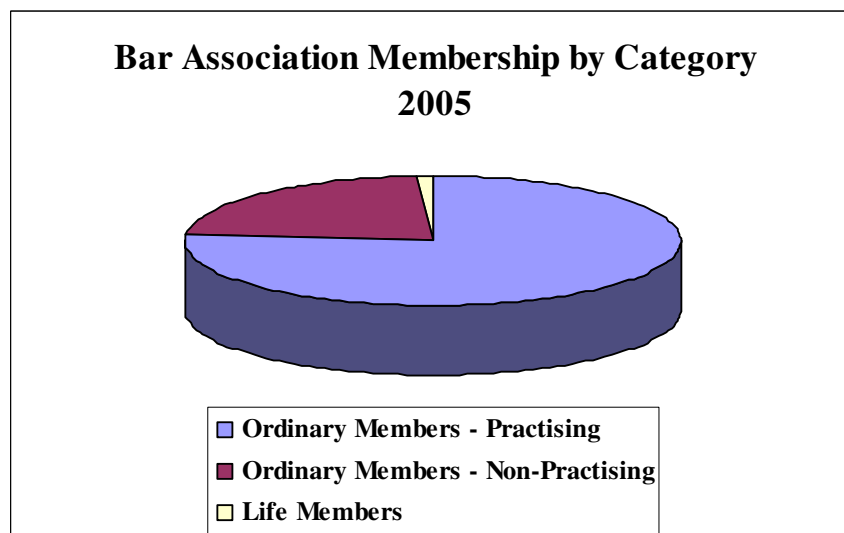
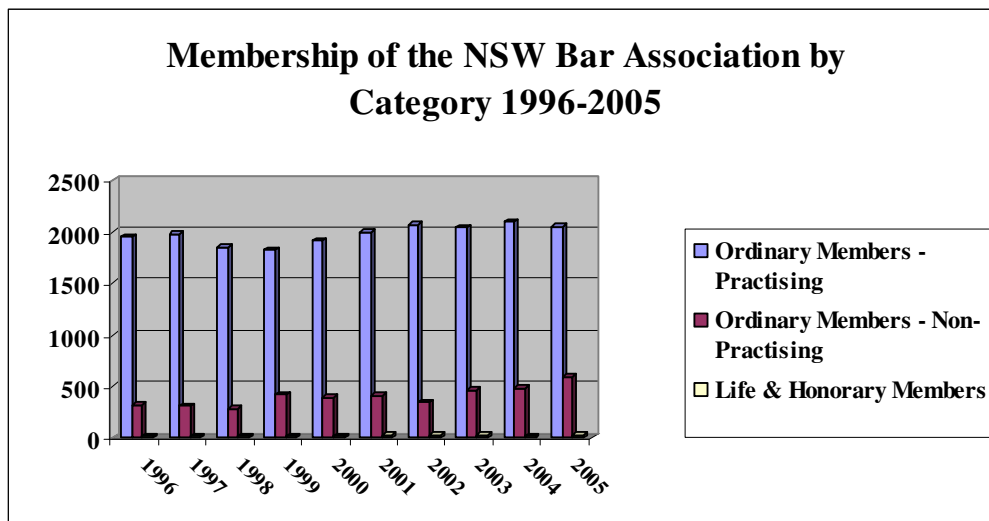
MEMBERSHIP DISTRIBUTION BY GENDER

	2005	Percentage
Male	2262	84%
Female	418	16%
Total	2680	



MEMBERSHIP DISTRIBUTION BY CATEGORY 1996 - 2005

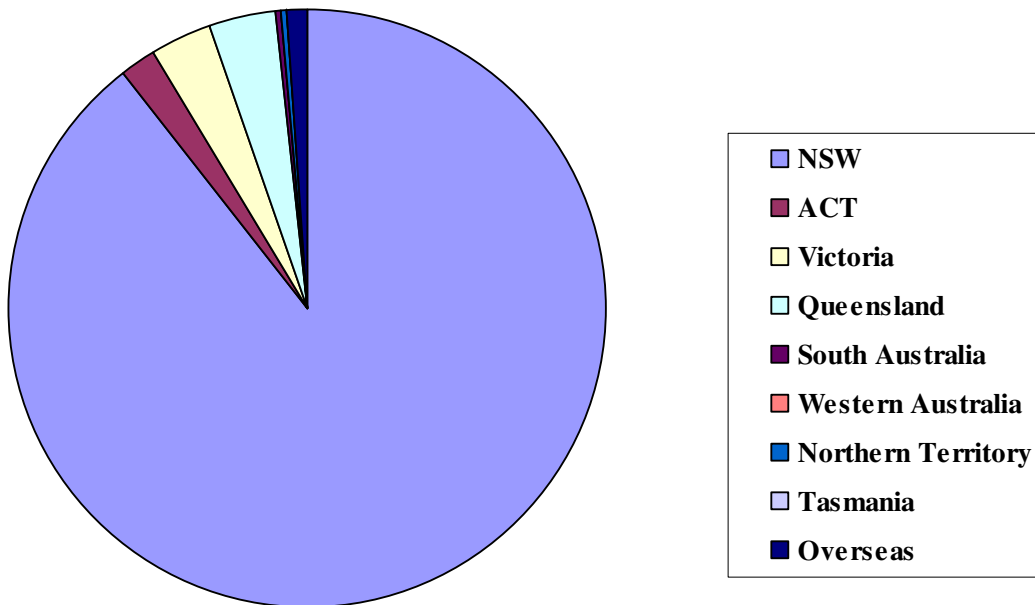
	1996	1997	1998	1999	2000	2001	2002	2003	2004	2005
Ordinary Members - Practising	1951	1976	1854	1825	1919	1999	2066	2041	2099	2055
Ordinary Members - Non-Practising	320	313	282	420	397	416	353	466	486	595
Life & Honorary Members	19	20	25	20	21	28	29	30	24	30
Total Number of Members	2290	2309	2161	2265	2337	2443	2448	2537	2609	2680



GEOGRAPHICAL LOCATION OF MEMBERS

	2005 Male	2005 Female	Total	Percentage
NSW	1998	396	2394	89.33%
ACT	47	8	55	2.05%
Victoria	81	5	86	3.21%
Queensland	93	5	98	3.66%
South Australia	7	0	7	0.26%
Western Australia	6	0	6	0.22%
Northern Territory	1	0	1	0.04%
Tasmania	1	0	1	0.04%
Overseas	28	4	32	1.19%
Total	2262	418	2680	

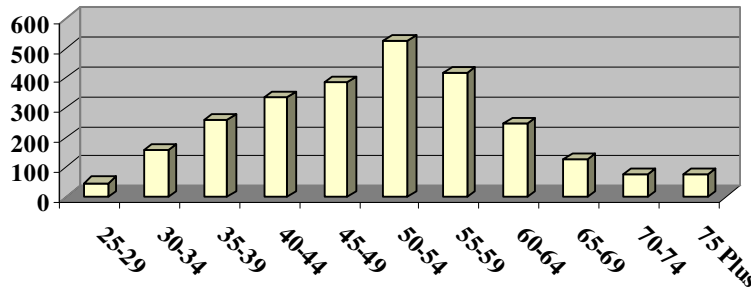
**Location of NSW Bar Association
Members 2005**



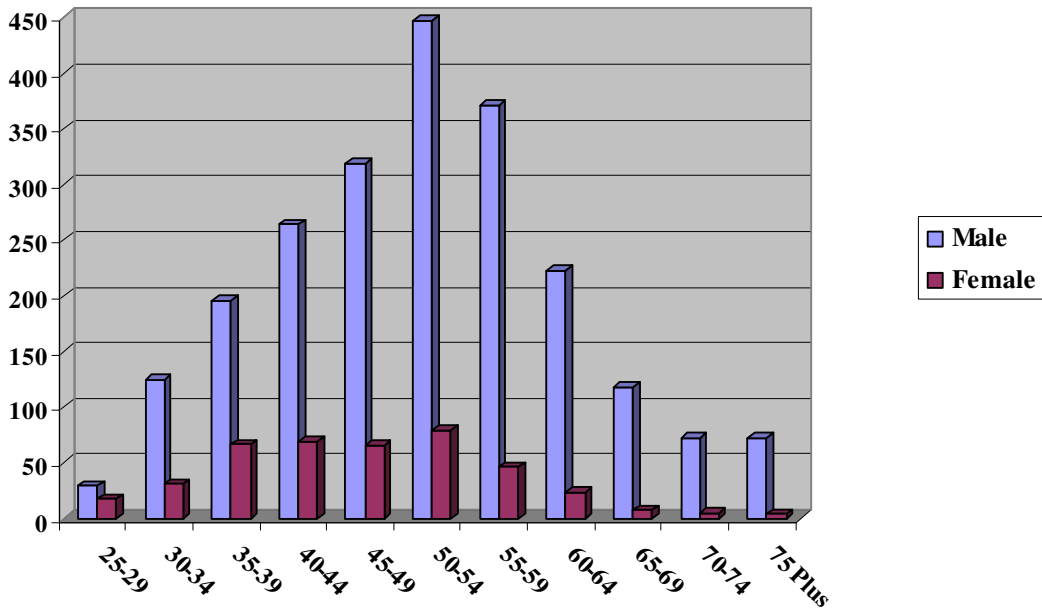
AGES OF MEMBERS

	25-29	30-34	35-39	40-44	45-49	50-54	55-59	60-64	65-69	70-74	75 Plus	Total
Male	29	125	195	264	319	447	371	222	118	72	72	2234
Female	17	31	66	69	65	79	46	23	7	5	4	412
Total	46	156	261	333	384	526	417	245	125	77	76	2646
Percentage	1.74%	5.90%	9.86%	12.59%	14.51%	19.88%	15.76%	9.26%	4.72%	2.91%	2.87%	

Ages of Members of the NSW Bar Association 2005

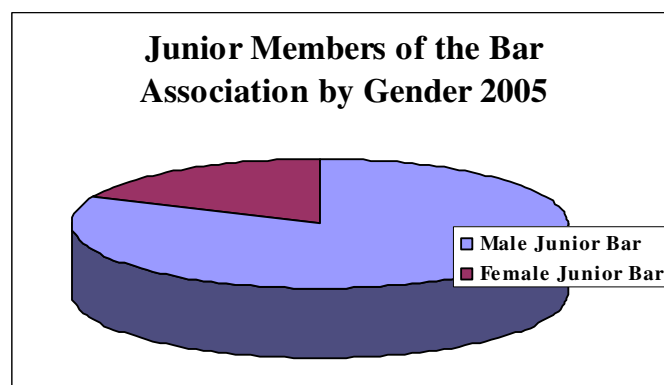
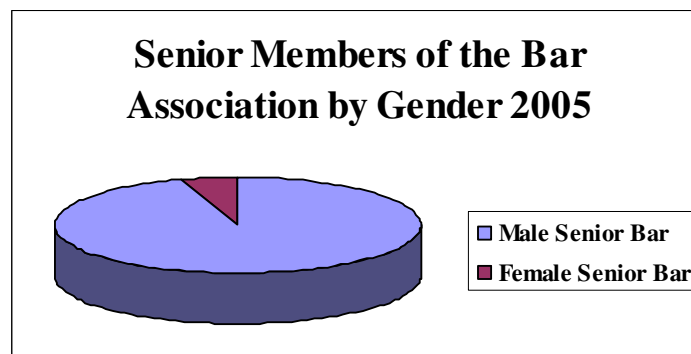
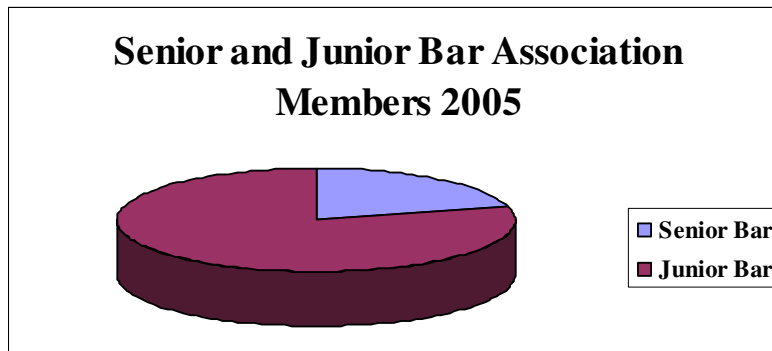


Ages of NSW Bar Association Members by Gender 2005



SENIOR AND JUNIOR MEMBERS (INNER/OUTER BAR)

	Total	Percentage
Male Senior Bar	520	19.40%
Female Senior Bar	28	1.04%
Male Junior Bar	1742	65.00%
Female Junior Bar	390	14.55%
Total	2680	



NOTE: Senior Counsel (QC and SC) are commonly called ‘silks’. SCs have been appointed since 1993 and replaced the appointment of Queen’s Counsel. The term ‘junior’ barrister means all barristers except those who have been appointed Senior Counsel (QC or SC). The term ‘junior barrister’ does not indicate the ability or number of years at the Bar; for example some ‘juniors’ have been practising for 30 years.

E-MAIL ADDRESSES

	No E-mail Address	E-mail Address	Total	% with E-mail
Male	126	2136	2262	94.43%
Female	15	403	418	96.41%
Total	141	2539	2680	

**E-Mail Addresses of NSW Bar Association Members
2005**

