

**SECTION ONE**  
**ALL MEMBERS OF THE NSW BAR**  
**ASSOCIATION**  
**(PRACTISING AND NON PRACTISING)**

# TABLE OF CONTENTS

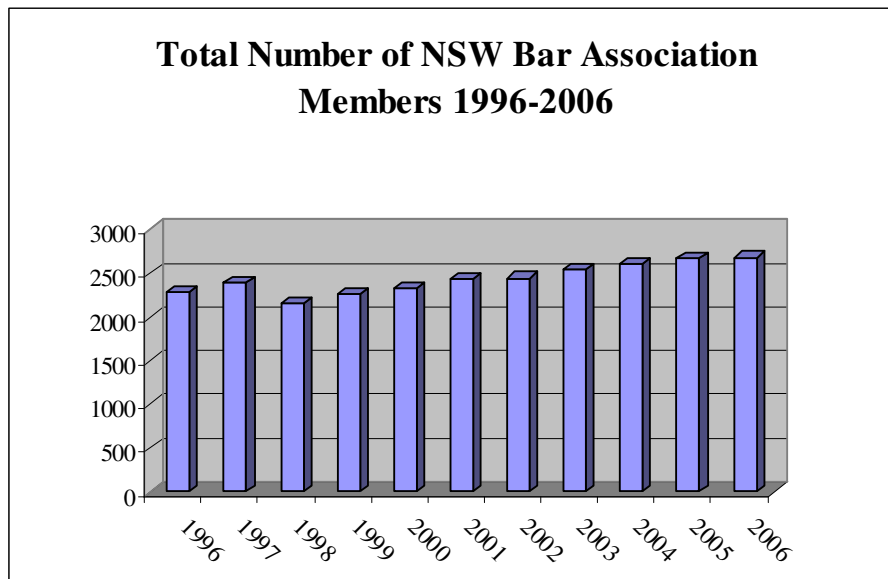
---

TOTAL NUMBER OF MEMBERS.....	3
MEMBERSHIP DISTRIBUTION BY GENDER.....	4
MEMBERSHIP DISTRIBUTION BY CATEGORY 1996 - 2006.....	5
GEOGRAPHICAL LOCATION OF MEMBERS.....	6
AGES OF MEMBERS.....	7
SENIOR AND JUNIOR MEMBERS (INNER/OUTER BAR).....	8
E-MAIL ADDRESSES.....	9

# TOTAL NUMBER OF MEMBERS 1996-2006

---

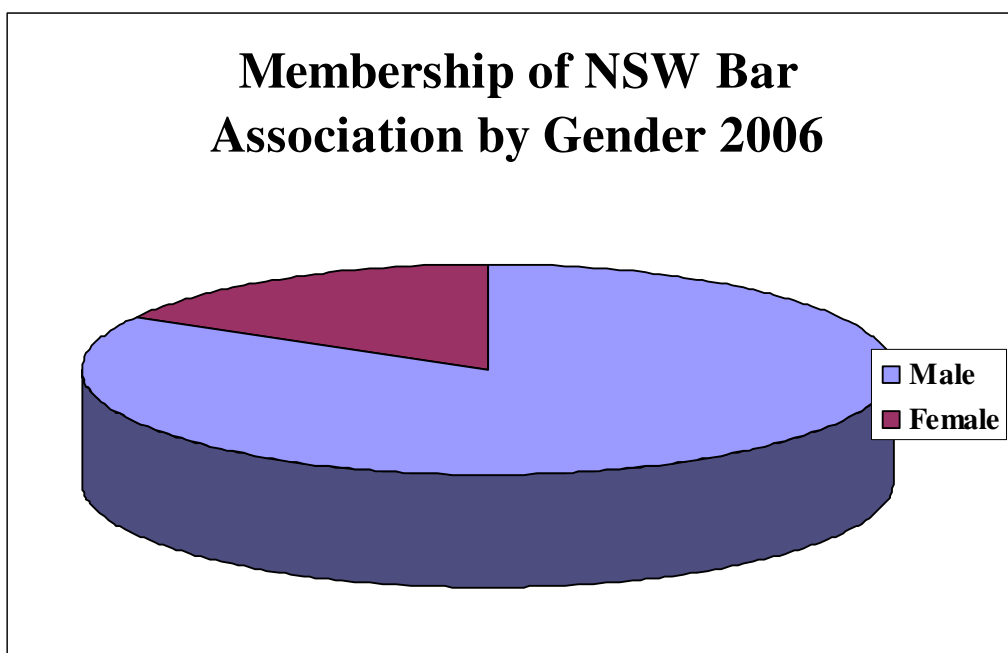
Year	Total	Annual % Change
1996	2290	
1997	2390	4.37%
1998	2161	-9.06%
1999	2265	4.81%
2000	2337	3.18%
2001	2443	4.53%
2002	2448	0.20%
2003	2537	3.60%
2004	2609	2.84%
2005	2680	2.72%
2006	2685	0.19%



## MEMBERSHIP DISTRIBUTION BY GENDER

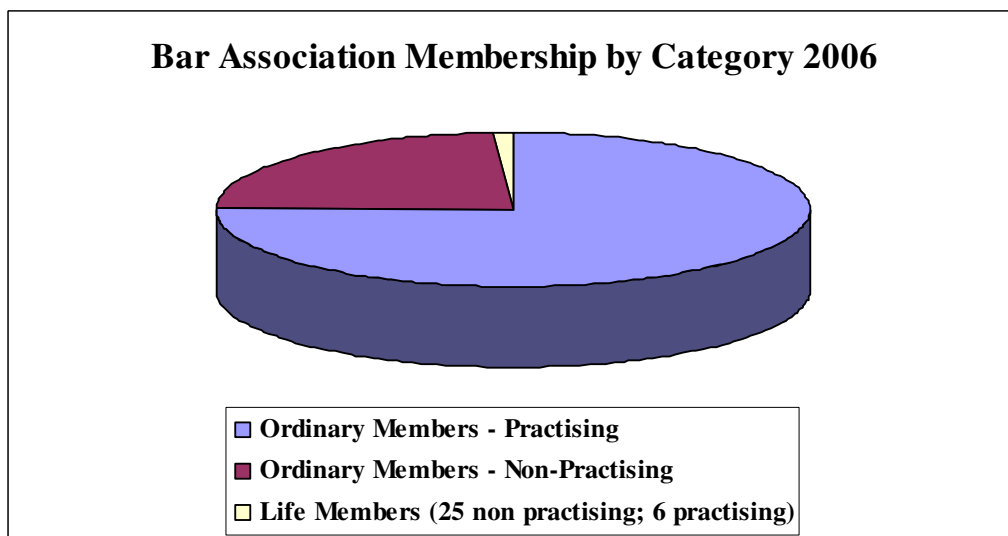
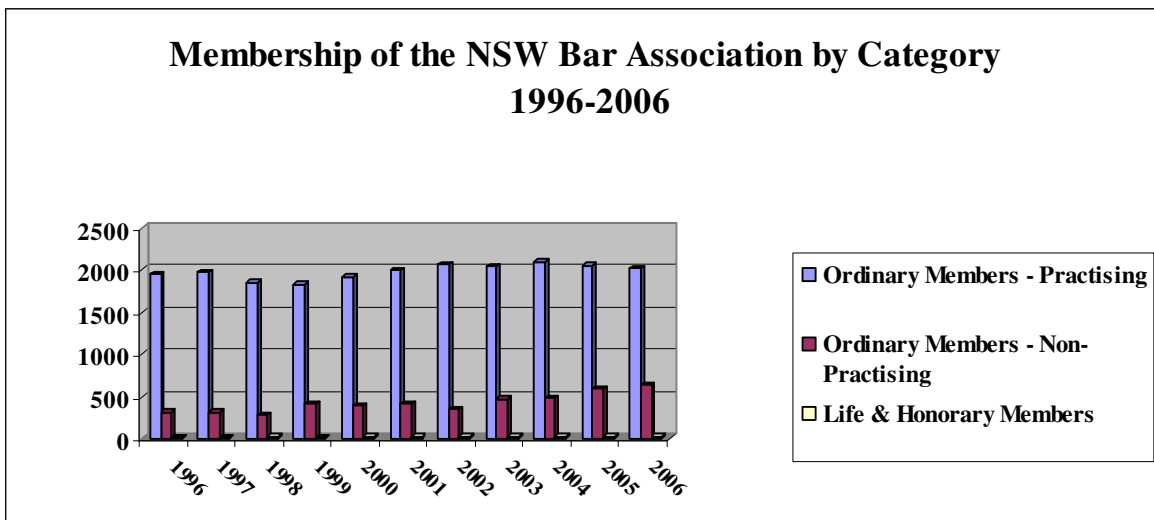
---

	2006	Percentage
Male	2240	83%
Female	445	17%
Total	2685	



# MEMBERSHIP DISTRIBUTION BY CATEGORY 1996 - 2006

	1996	1997	1998	1999	2000	2001	2002	2003	2004	2005	2006
<b>Ordinary Members - Practising</b>	1951	1976	1854	1825	1919	1999	2066	2041	2099	2055	2020
<b>Ordinary Members - Non-Practising</b>	320	313	282	420	397	416	353	466	486	595	634
<b>Life &amp; Honorary Members</b>	19	20	25	20	21	28	29	30	24	30	31
<b>Total Number of Members</b>	2290	2309	2161	2265	2337	2443	2448	2537	2609	2680	2685

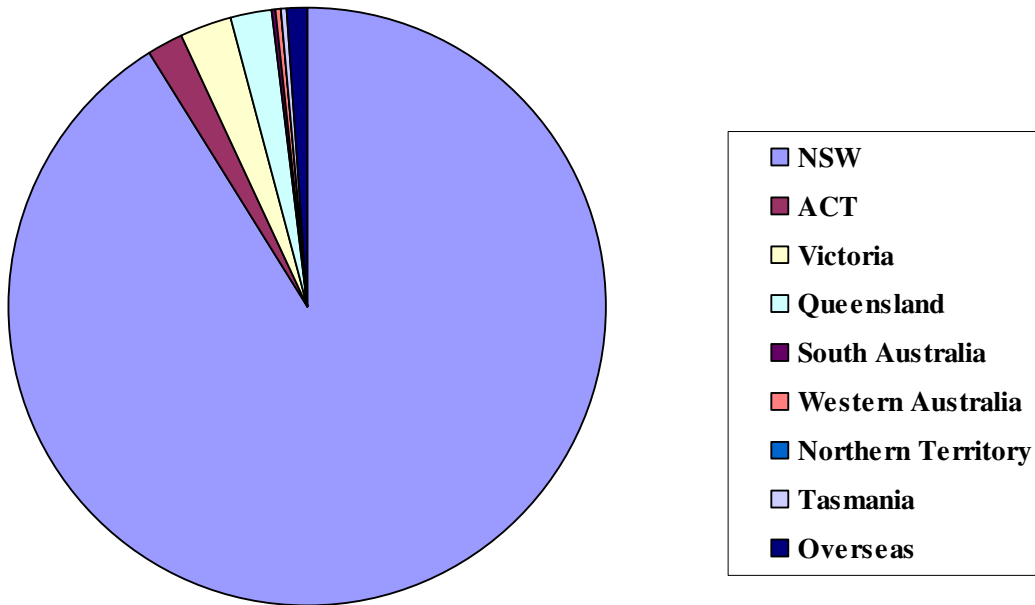


## GEOGRAPHICAL LOCATION OF MEMBERS

---

	2006 Male	2006 Female	Total	Percentage
NSW	2022	426	2448	91.17%
ACT	42	8	50	1.86%
Victoria	73	4	77	2.87%
Queensland	60	1	61	2.27%
South Australia	7	0	7	0.26%
Western Australia	6	1	7	0.26%
Northern Territory	0	0	0	0.00%
Tasmania	2	0	2	0.07%
Overseas	28	5	33	1.23%
<b>Total</b>	<b>2240</b>	<b>445</b>	<b>2685</b>	

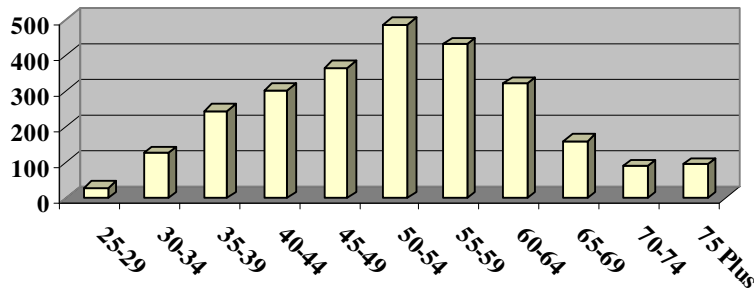
**Location of NSW Bar Association  
Members 2006**



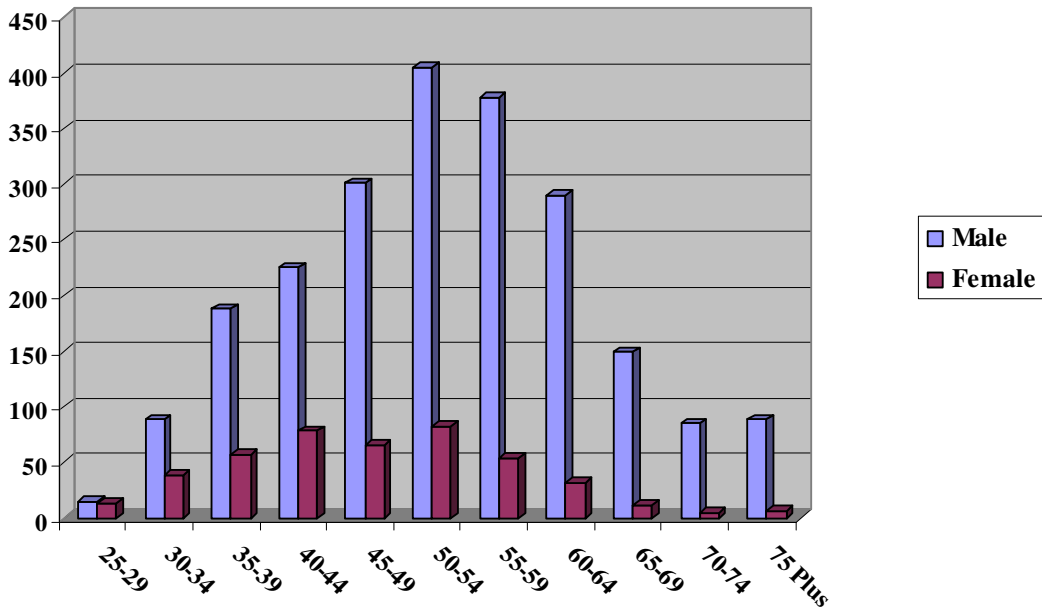
## AGES OF MEMBERS

	25-29	30-34	35-39	40-44	45-49	50-54	55-59	60-64	65-69	70-74	75 Plus	Total
<b>Male</b>	15	88	188	225	301	405	378	290	149	85	88	2212
<b>Female</b>	13	38	57	78	65	82	54	32	11	5	6	441
<b>Total</b>	28	126	245	303	366	487	432	322	160	90	94	2653
<b>Percentage</b>	1.06%	4.75%	9.23%	11.42%	13.80%	18.36%	16.28%	12.14%	6.03%	3.39%	3.54%	

**Ages of Members of the NSW Bar Association 2006**



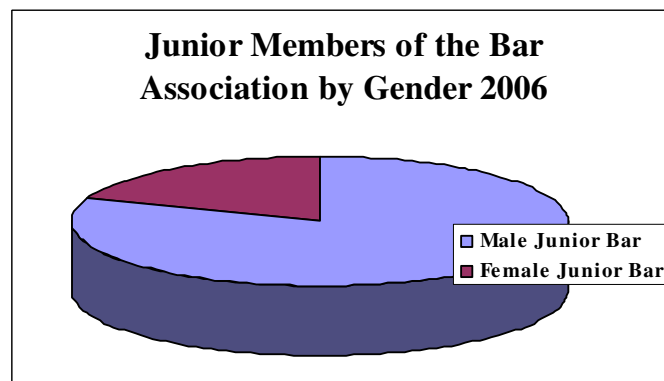
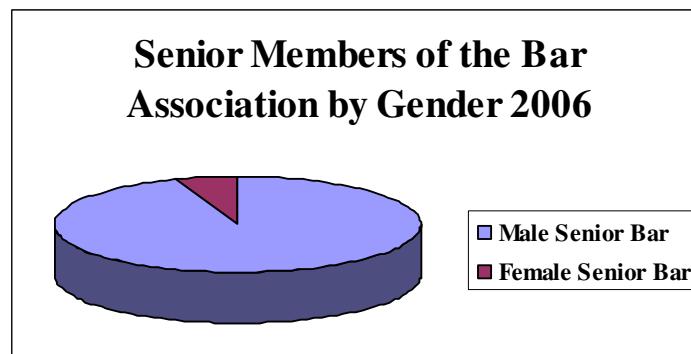
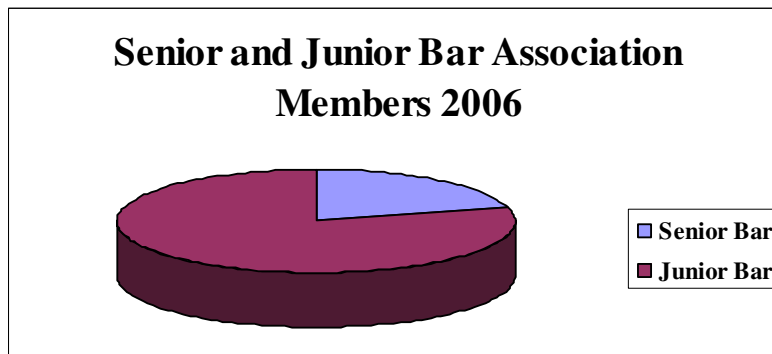
**Ages of NSW Bar Association Members by Gender  
2006**



# SENIOR AND JUNIOR MEMBERS (INNER/OUTER BAR)

---

	Total	Percentage
Male Senior Bar	521	19.40%
Female Senior Bar	31	1.15%
Male Junior Bar	1719	64.02%
Female Junior Bar	414	15.42%
<b>Total</b>	<b>2685</b>	



**NOTE:** Senior Counsel (QC and SC) are commonly called ‘silks’. SCs have been appointed since 1993 and replaced the appointment of Queen’s Counsel. The term ‘junior’ barrister means all barristers except those who have been appointed Senior Counsel (QC or SC). The term ‘junior barrister’ does not indicate the ability or number of years at the Bar; for example some ‘juniors’ have been practising for 30 years.



# E-MAIL ADDRESSES

---

	No E-mail Address	E-mail Address	Total	% with E-mail
<b>Male</b>	97	2143	2240	95.67%
<b>Female</b>	9	436	445	97.98%
<b>Total</b>	106	2579	2685	

**E-Mail Addresses of NSW Bar Association Members  
2006**

