

**SECTION THREE**  
**THE NSW BAR**  
**ALL HOLDERS OF NSW PRACTISING**  
**CERTIFICATES**

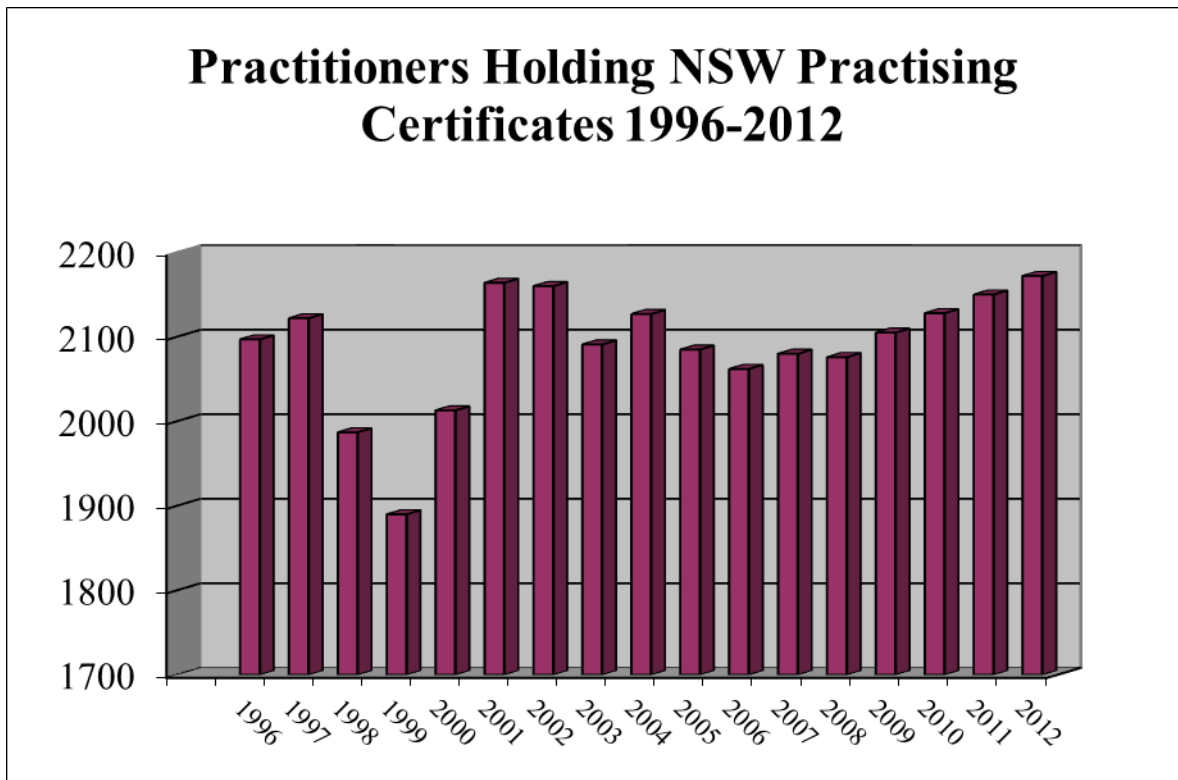
# TABLE OF CONTENTS

---

HOLDERS OF NSW PRACTISING CERTIFICATES 1996-2012.....	3
HOLDERS OF NSW PRACTISING CERTIFICATES BY GENDER .....	4
AGES OF HOLDERS OF NSW PRACTISING CERTIFICATES .....	5
HOLDERS OF NSW PRACTISING CERTIFICATES – SENIORS AND JUNIORS	7
HOLDERS OF NSW PRACTISING CERTIFICATES – YEARS OF PRACTICE ...	8

# HOLDERS OF NSW PRACTISING CERTIFICATES 1996-2012

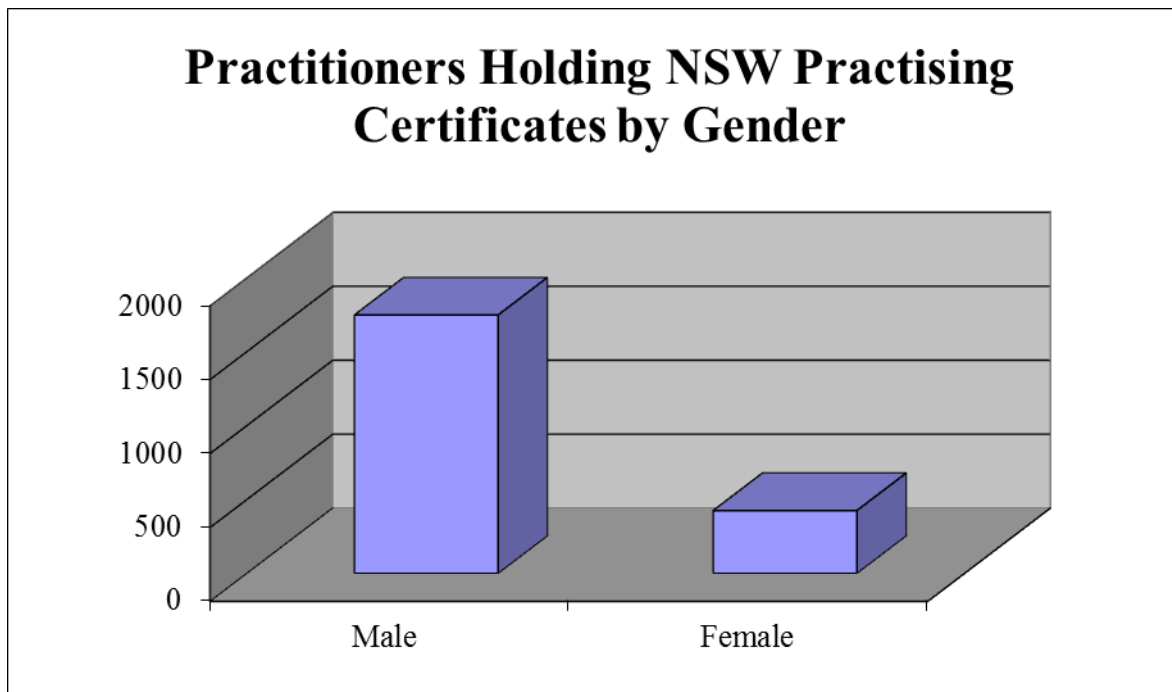
		Annual % Change
<b>1996</b>	2097	
<b>1997</b>	2122	1.19%
<b>1998</b>	1987	-6.36%
<b>1999</b>	1890	-4.88%
<b>2000</b>	2013	6.51%
<b>2001</b>	2164	2.29%
<b>2002</b>	2160	-0.18%
<b>2003</b>	2091	-3.20%
<b>2004</b>	2127	1.72%
<b>2005</b>	2085	0.52%
<b>2006</b>	2062	-1.10%
<b>2007</b>	2080	0.87%
<b>2008</b>	2076	0.24%
<b>2009</b>	2105	1.40%
<b>2010</b>	2128	1.09%
<b>2011</b>	2150	1.13%
<b>2012</b>	2172	1.02%



# HOLDERS OF NSW PRACTISING CERTIFICATES BY GENDER

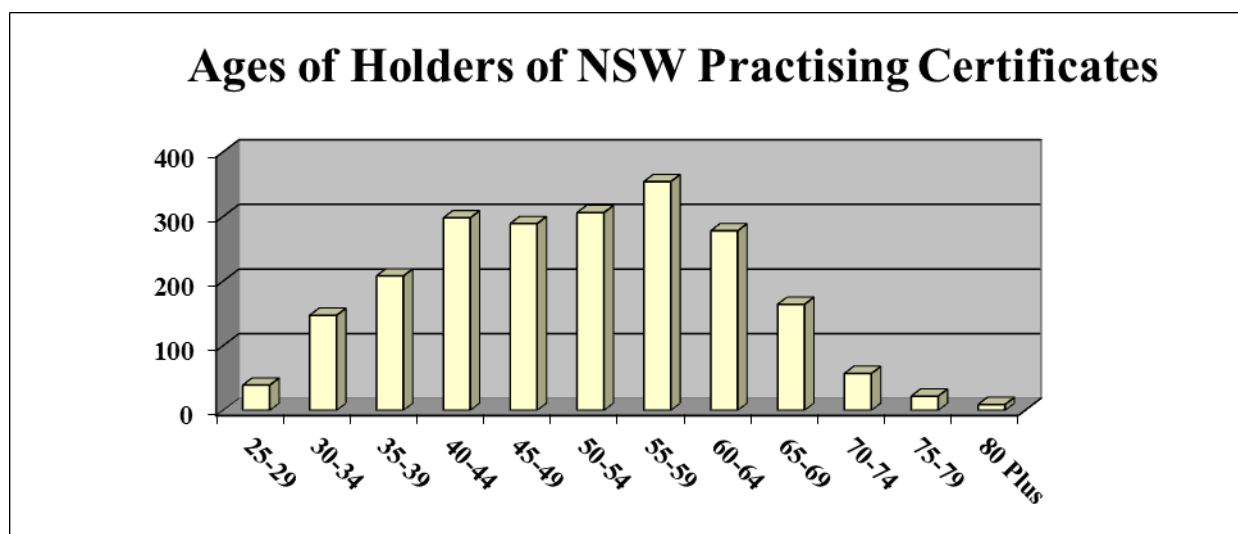
---

	2012	Percentage
Male	1747	80.43%
Female	425	19.57%
Total	2172	

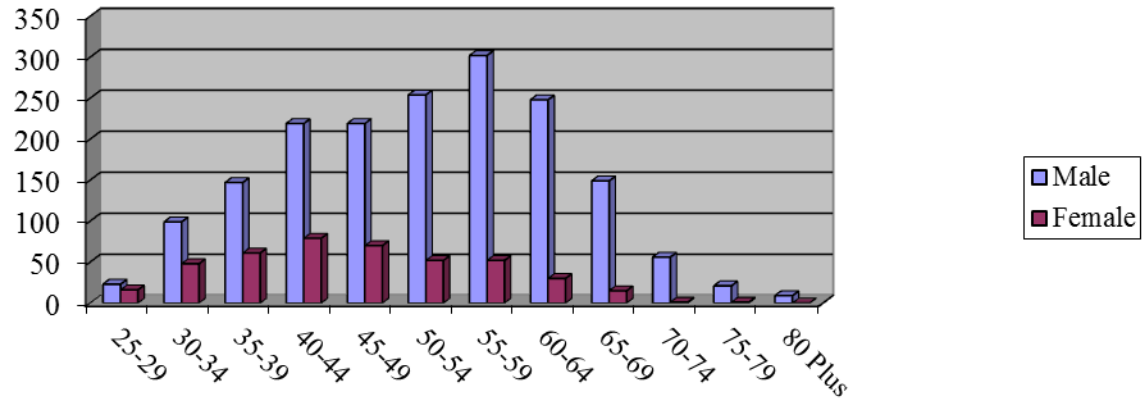


## AGES OF HOLDERS OF NSW PRACTISING CERTIFICATES

	20-24	25-29	30-34	35-39	40-44	45-49	50-54	55-59	60-64	65-69	70-74	75-79	80 Plus	Total
<b>Male</b>	1	23	99	147	219	219	254	302	248	149	56	21	9	1747
<b>Female</b>	0	16	48	61	79	70	52	52	30	15	1	1	0	425
<b>Total</b>	1	39	147	208	298	289	306	354	278	164	57	22	9	2172
<b>Percentage</b>	0.05%	1.80%	6.77%	9.58%	13.72%	13.31%	14.09%	16.30%	12.80%	7.55%	2.62%	1.01%	0.41%	



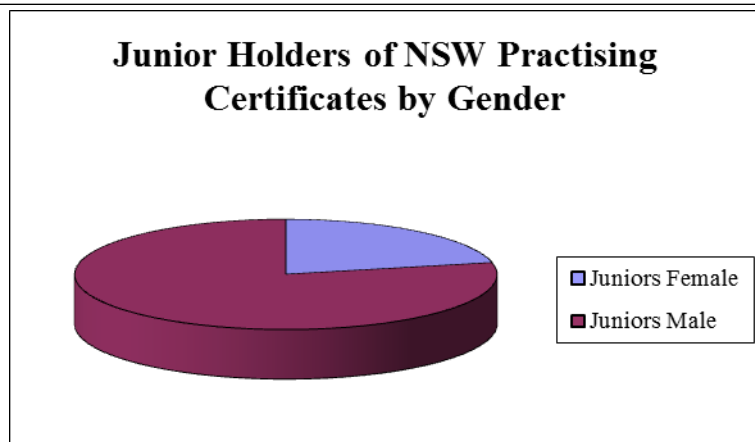
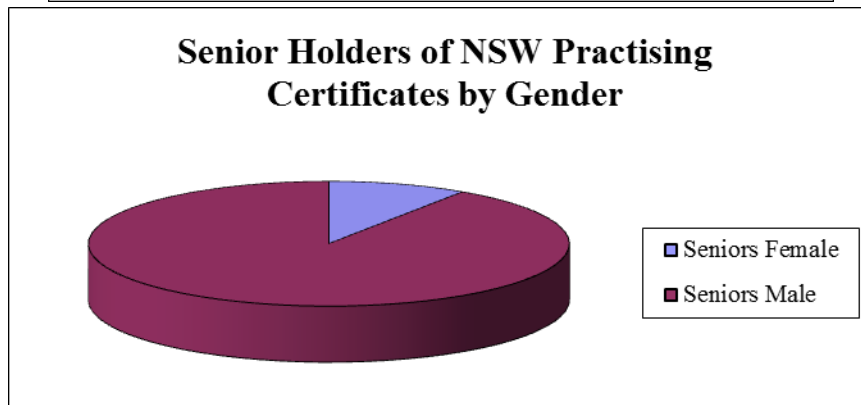
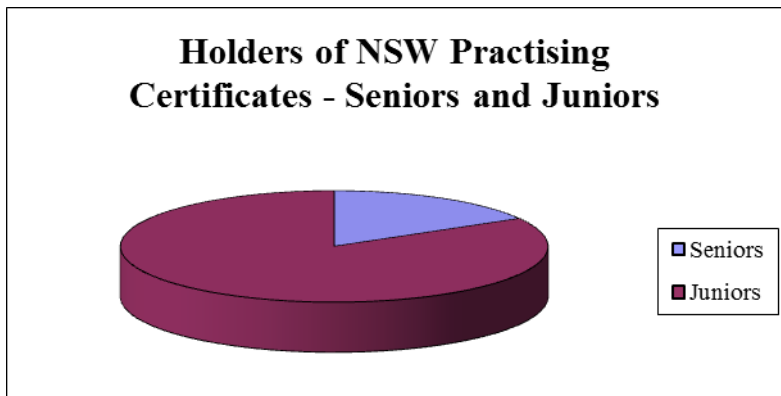
## Ages of Practitioners Holding NSW Practising Certificates by Gender



# HOLDERS OF NSW PRACTISING CERTIFICATES – SENIORS AND JUNIORS

---

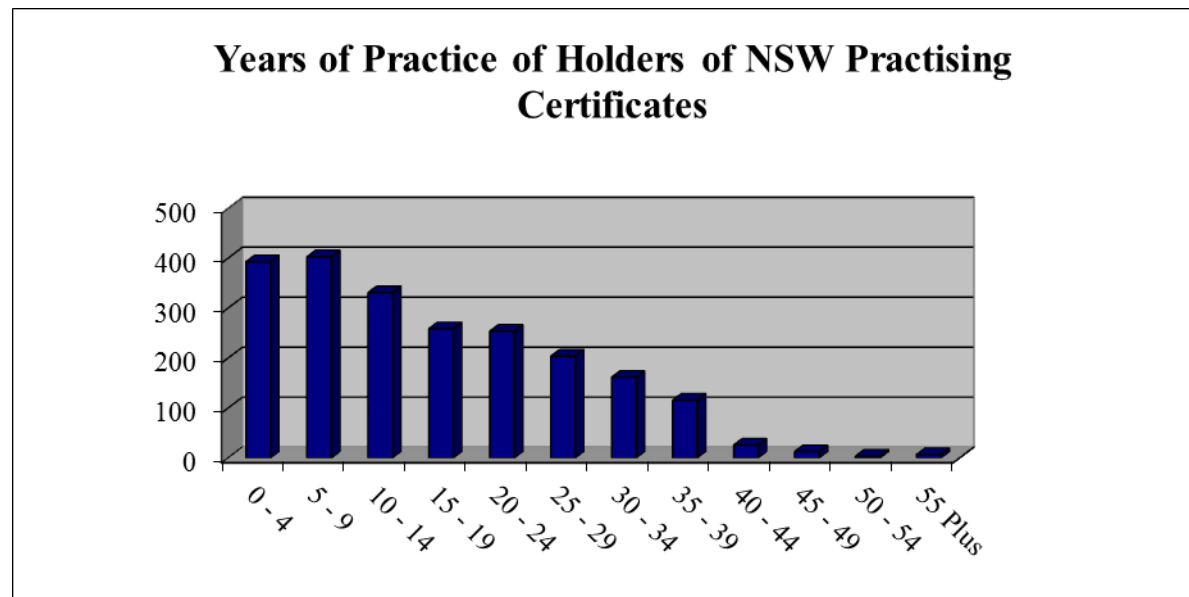
	Total	Percentage
Male Senior Bar	328	15.10%
Female Senior Bar	34	1.57%
Male Junior Bar	1419	65.33%
Female Junior Bar	391	18.00%
<b>Total</b>	<b>2172</b>	



**NOTE:** Senior Counsel (QC and SC) are commonly called ‘silks’. SCs have been appointed since 1993 and replaced the appointment of Queen’s Counsel. The term ‘junior’ barrister means all barristers except those who have been appointed Senior Counsel (QC or SC). The term ‘junior’ barrister does not indicate the ability or number of years at the Bar; for example some ‘juniors’ have been practising for 30 years.

## HOLDERS OF NSW PRACTISING CERTIFICATES – YEARS OF PRACTICE

	0 - 4	5 - 9	10 - 14	15 - 19	20 - 24	25 - 29	30 - 34	35 - 39	40 - 44	45 - 49	50 - 54	55 Plus	Total
<b>Male</b>	266	286	251	212	231	186	151	115	25	13	4	7	1747
<b>Female</b>	127	117	80	47	23	18	11	1	1	0	0	0	425
<b>Total</b>	393	403	331	259	254	204	162	116	26	13	4	7	2172
<b>Percentage</b>	18.09%	18.55%	15.24%	11.92%	11.69%	9.39%	7.46%	5.34%	1.20%	0.60%	0.18%	0.32%	





### Years of Practice of holders of NSW Practising Certificates by Gender

